







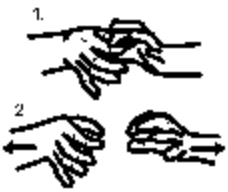
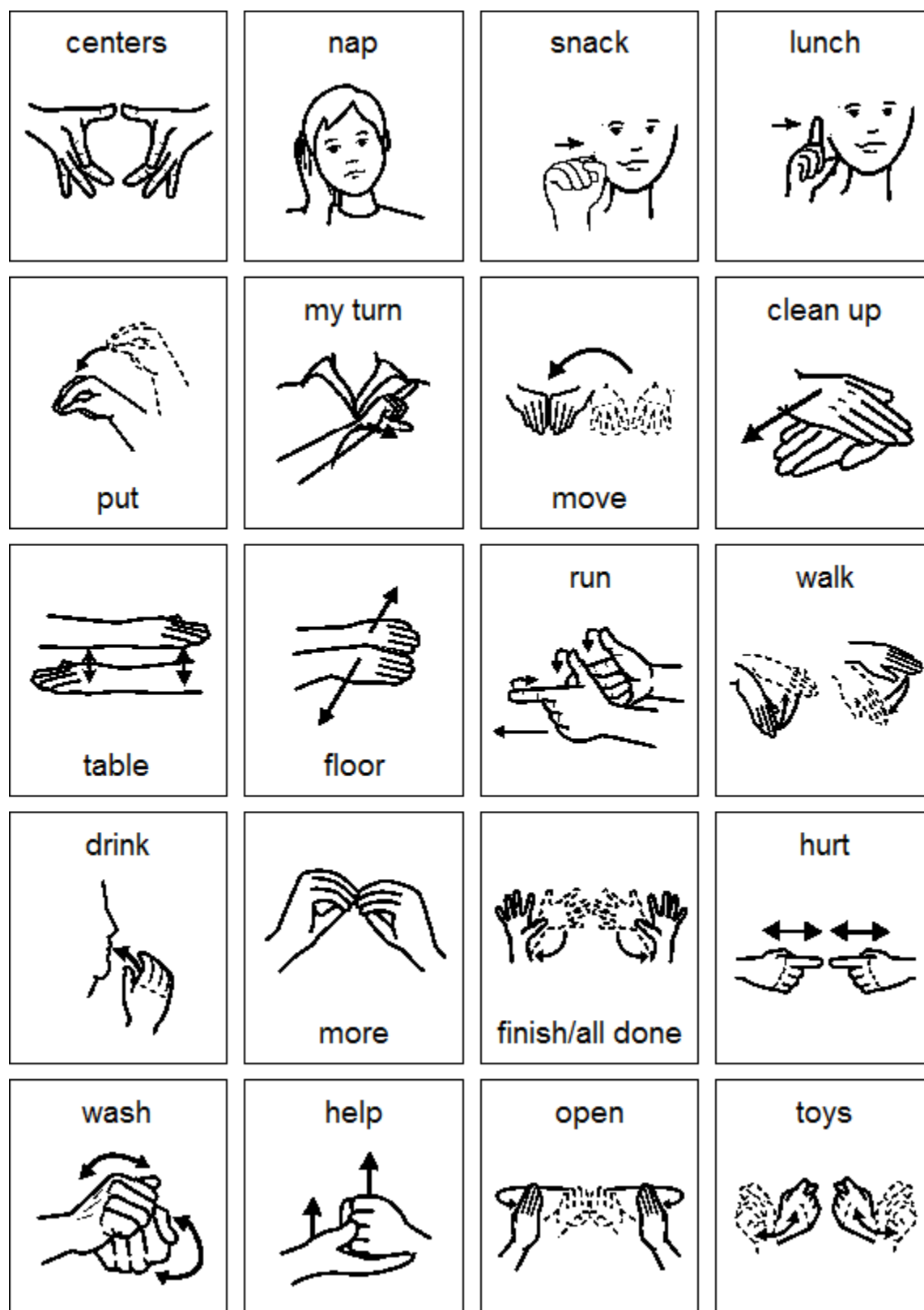
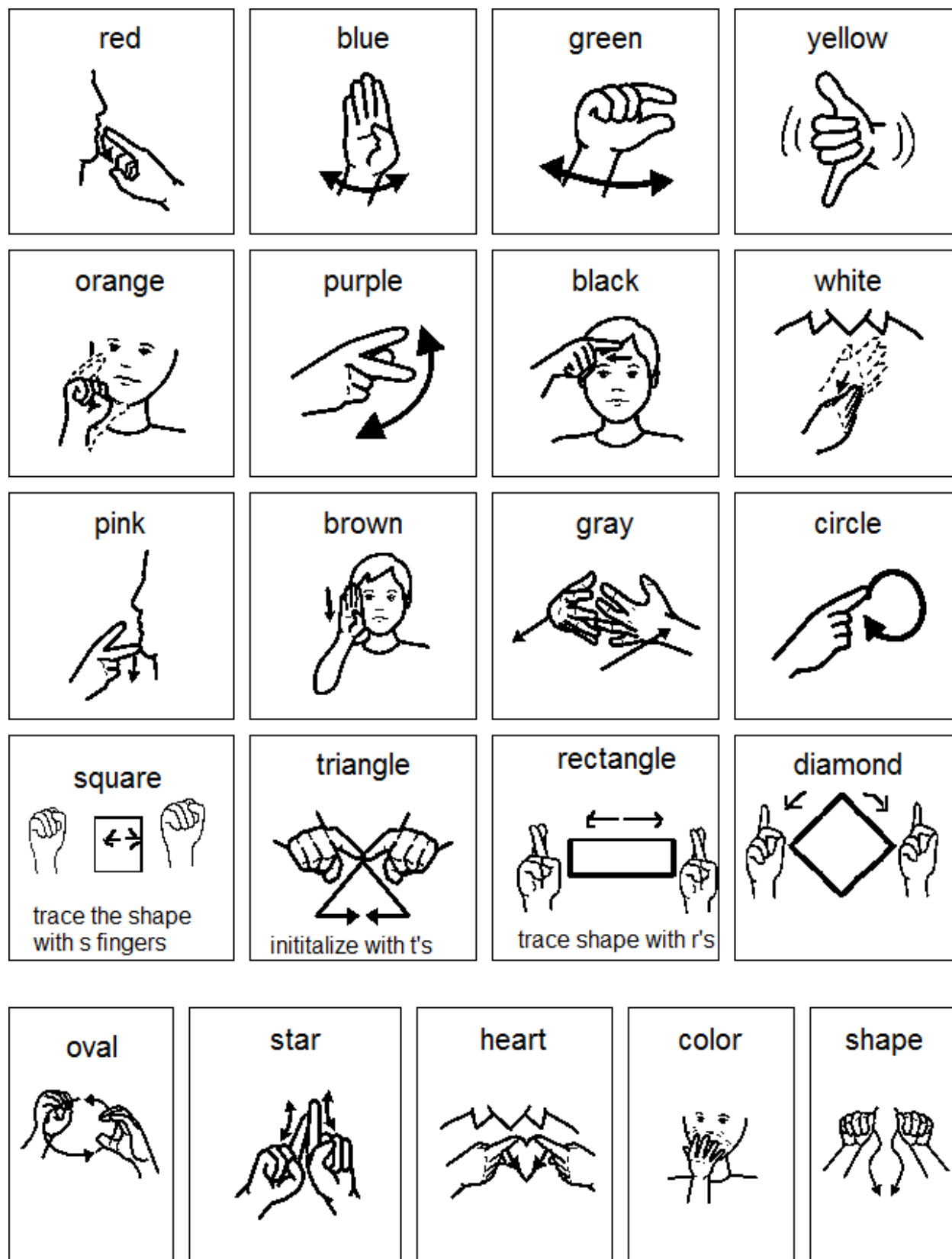
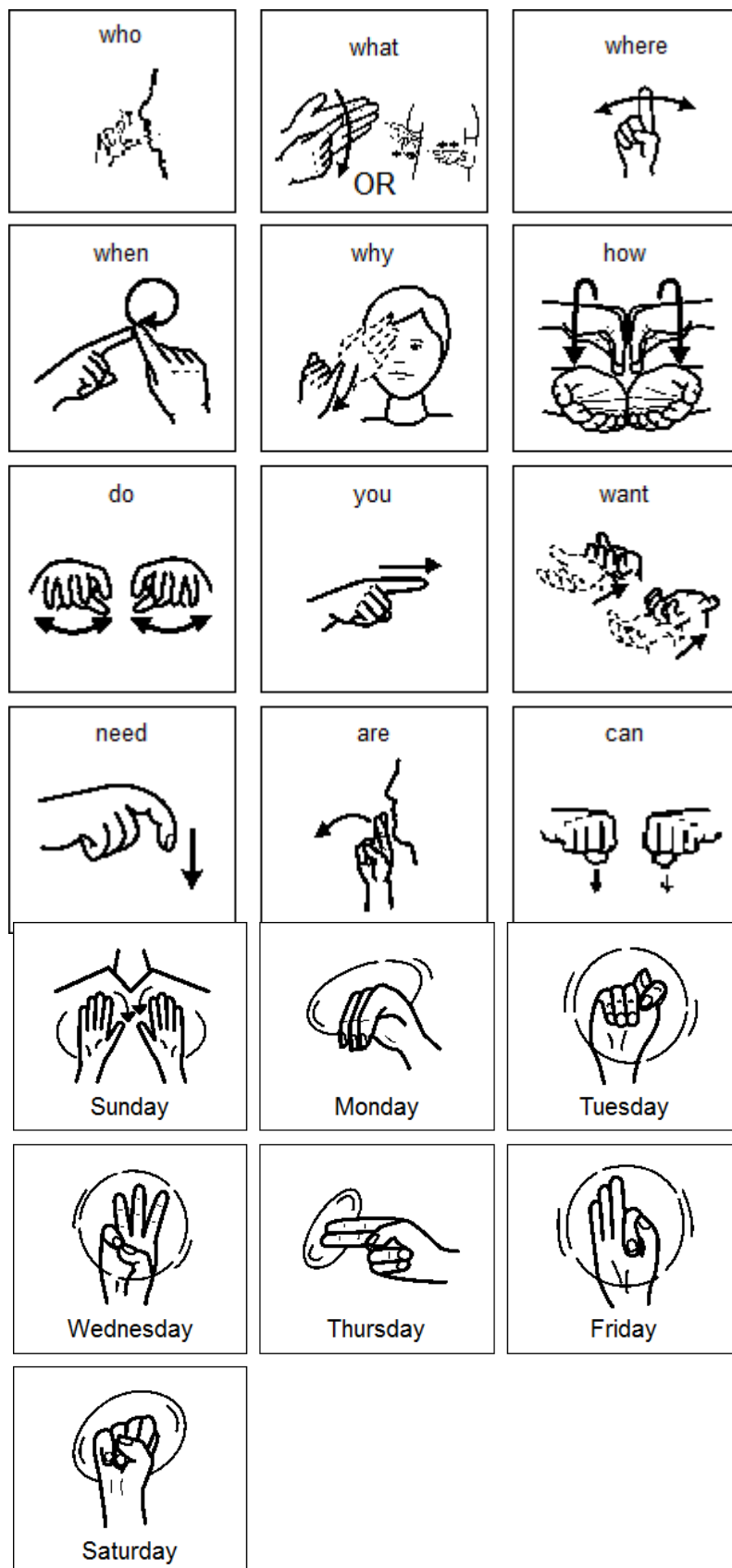


<p>sit</p> 	<p>please</p> 	<p>line up</p> 	<p>time</p> 
<p>eat</p> 	<p>go</p> 	<p>stand</p> 	<p>wait</p> 
<p>stop</p> 	<p>yes</p> 	<p>no</p> 	<p>what</p> 
<p>you</p> 	<p>want</p> 	<p>music</p> 	<p>play</p> 
<p>toilet</p> 	<p>bus</p> 	<p>outside</p> 	<p>story</p> 





Basic Signs for Early Childhood: Questions and Days of the Week



*Created by Molly Herman using Board Maker by Mayer Johnson for educational purposes only 7-28-15.



*Created by Molly Herman using Board Maker by Mayer Johnson for educational purposes only 7-28-15.