



Sharing Developmental Concerns with Families

Sharing a Vision Conference 2015

Reflecting Back on My Experiences	1
Building Relationships with Families	2
Critical Components	3
Look What I Can Do Child Find	5
How Am I Doing?	6
Next Steps	7

Let's Keep in Touch!

Send mail: EITP at The Children's Research Center, 51 Gerty Drive Room 105, Champaign IL, 61820

Visit our website: www.illinoiseittraining.org

Follow us on twitter: @EITPIllinois

Join our Facebook group: The Early Intervention Training Program at the University of Illinois

Reflecting Back on My Experiences

Reflect upon a time when someone had to share difficult information with you...

Describe how you felt after the conversation?

What worked in that conversation?

What strategies might have worked better from your perspective?

What impact does it have on your relationships when it doesn't "go right"?

Building Relationships with Families...Learning Their Story

LOOKS LIKE	DOESN'T LOOK LIKE
------------	-------------------

CRITICAL COMPONENTS

VIDEO REFLECTIONS: China & Aaron

Describe the dilemma – the particular challenge the teacher and father face in developing a trusting partnership.

Describe Aaron's priorities and concerns.

Describe China's priorities and concerns.

Perspectives on Collaboration –

What are the characteristics of the child care program? What are the attitudes and beliefs of the teacher?

What are Aaron's strengths, needs, and preferences related to collaboration?

What is your own perspective on how a trusting partnership could be developed between Aaron and China?

CRITICAL COMPONENTS

Setting the Stage

Documentation

Developmental Screening

Ongoing Assessment

Staff Support

Knowing Local Resources



Look What I Can Do

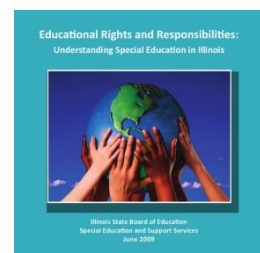
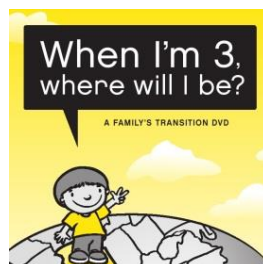
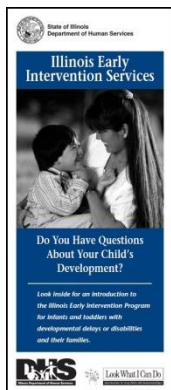
Early Intervention For Young Children With Developmental Delays

WHAT IS CHILD FIND & WHY DO I NEED TO KNOW ABOUT IT??

In Illinois, the Child Find Project provides free public awareness services as part of the Child Find system. The goal of the Child Find Project is to educate the public about the importance of early intervention and early childhood special education services for eligible children as early as possible in their development.

As a child care professional, you are responsible for talking with families about their child's development and to help link families with services that might help their child develop. Some of those programs are:

- IL Early Intervention Child & Family Connections for families that have a baby or toddler under the age of 3 with developmental delays or disabilities or who meet the defined at risk criteria.
- Early Head Start/Head Start for families who are pregnant or have a child under the age of 5 who meet eligibility criteria.
- School District Prenatal to Three Programs & Early Childhood Services for children under the age of 5 who meet eligibility criteria.



To learn more about these programs & who to contact in your local area & to order FREE developmental growth charts & other materials for the families you serve, please visit the Illinois Child Find website at <http://www.childfind-idea-il.us> or contact:

Child Find - Kathy Hill, Project Coordinator

Toll Free: (800) 851-6197 Local: (618) 253-5581 Fax: (618) 252-8472

How Am I Doing?

Questions to Elicit Feedback on Communication Practices

One way of learning about areas of strength and improvement in communication practices is to ask colleagues or families for their feedback after a conversation or meeting. Below are some sample questions to ask.

Attending and Active Listening

Do I seem engaged and interested when we meet and talk?

Am I able to grasp the meaning and feelings underlying the information shared?

Seeking and Verifying

Am I able to pull together main points of discussion to clarify issues?

Do I seem open to divergent ideas and perspectives?

Joining and Supporting

Am I able to convey support and appreciation for others' efforts to address problems?

Do I demonstrate a willingness to learn from others?

Am I able to provide information in a clear and non-judgmental fashion?

Am I able to achieve consensus when we are making decisions about goals, strategies, and plans?

MY NEXT ACTIONS

What are three strategies you will build into your own professional practice to share developmental concerns in partnership with families?

1.

2.

3.

What supports do you need to implement your strategies?