



THE 8TH ILLINOIS STATEWIDE COLLABORATIVE EARLY CHILDHOOD CONFERENCE

Windows of Opportunity

September 29–October 1, 2003

Crowne Plaza Hotel
Springfield, Illinois

CONFERENCE PROGRAM AND REGISTRATION FORM ENCLOSED

Coordinated by:

Illinois Subdivision of the Division for Early Childhood of the
Council for Exceptional Children (IDEC)

Sponsored by:

Illinois State Board of Education

StarNet

Project CHOICES

Division of Early Childhood Education

Illinois Department of Human Services

Bureau of Early Intervention

Illinois Network of Child Care Resource and Referral Agencies

Illinois Early Childhood Intervention Clearinghouse

Illinois Department of Children and Family Services

Illinois Subdivision of the Division for Early Childhood
of the Council for Exceptional Children

AmeriCorps Benefits Children (ABC) Literacy Program

Community Child Care Connection

National Lekotek Center

Early Bird Registration Deadline: July 15, 2003

Regular Registration Deadline: September 1, 2003

Website: <http://idec.crc.uiuc.edu/conference>



Faculty Enrichment:

Meeting the Challenge in Early Childhood Teacher/Staff Preparation!

Faculty from two and four year teacher preparation programs, training personnel and other interested individuals are invited to participate in the Faculty Enrichment Strand culminating in a joint breakfast meeting of ACCESS and ILAECTE, two professional associations for early childhood professionals.

TUESDAY•SEPTEMBER 30, 2003

7:00 am – 9:00 am

Continental Breakfast and Networking

8:00 am – 10:00 am

Choose from over 15 workshops!

10:15 am – 11:45 am

Beyond Blending: Resources and Strategies that Prepare College Students to Support Inclusion

Camille Catlett, Educational Planner/Developer, Frank Porter Graham Child Development Center, University of North Carolina
This presentation will offer participants a variety of ways to infuse content related to young children with special needs and their families into their existing coursework, field experiences and training. Information, strategies and resources for infusing new content, capabilities and values related to young children with special needs within each of the NAEYC's standards for professional development will be provided. The session's organization will support participants incorporating new ideas into their existing teaching and training experiences.

11:45 am – 1:00 pm

Lunch Break and Networking

Bring your box lunch and join other early childhood faculty for discussion and sharing of ideas.

1:00 pm – 3:00 pm

Choose from over 15 workshops!

3:15 pm – 4:45 pm

Building Competencies in Developing Partnerships with Families: Faculty and Student Perspectives

*Faculty Presenters: Susan Maude, EdD, Loras College;
Therese Wehman, PhD, Elmhurst College;
Nancy Cheeseman, MA, Elmhurst College*

Part one of this session will highlight how families are included as a critical preservice component within two institutions of higher education: 1) Loras College's Undergraduate B-8 Unified Early Childhood Training Program, and 2) Elmhurst College's Graduate B-5 Early Childhood Special Education Training Program. Faculty from each program will provide an overview of ways curricular content, activities, and practica

have been enhanced by the active inclusion of families. Evaluation methods used to assess student competencies in building successful partnerships with families will also be discussed.

Part two will consist of a panel of two current students, one from each program, and two program alumni, one from each program, providing feedback on their preservice experiences with families and the carry over this training has had in their current jobs working in Early Intervention B-3 and Early Childhood Special Education 3-5 settings.

WEDNESDAY•OCTOBER 1, 2003

7:30 am – 9:00 am

Continental Breakfast

ACCESS (Community College Professors) and Illinois Association of Early Childhood Teacher Educators (ILAECTE) have been invited by the Faculty Enrichment Committee to a joint breakfast meeting before the Wednesday General Session presenter.

9:00 am – 10:30 am

General Session Keynote Presentation

10:45 am – 12:15 pm

What does the Early Childhood Career Lattice Mean to 2 year and 4 year Early Childhood Teacher Preparation Institutions?

Presented by Karen Bruning
Selected Updates from Statewide Leaders Working on Early Childhood Issues

12:15 pm – 1:30 pm

Lunch Break and Networking

Bring your box lunch and join other early childhood faculty for discussion and sharing of ideas.

1:30 pm – 3:00 pm

Choose from over 15 workshops!



Sharing A Vision: Windows of Opportunity

Once again, we are delighted to invite you to join us and other members of the Illinois Division for Early Childhood (IDEC) from across Illinois, to the Eighth Illinois Early Childhood Sharing A Vision Conference: Windows of Opportunity. Through the collaborative efforts of early childhood supporters from across the state, this year's conference will be held at the Crowne Plaza Springfield in Springfield, Illinois, September 29-October 1, 2003. We urge individuals and teams to take advantage of this state-wide event. In order to address mutually shared issues and goals and to promote networking and collaboration among the various early childhood constituents, the committee has come together to plan and coordinate this joint statewide conference offering in-depth workshop sessions; networking and information sharing opportunities; and exhibits from local and national vendors.

If you are an early childhood educator, early childhood special educator, early intervention specialist, therapist, other service provider, preservice and inservice educator, administrator, policy-maker or family member, then this conference is for you.

We sincerely hope you will be a part of the 2003 Sharing A Vision Conference beginning with the reception and keynote on September 29 through the final workshop on October 1. We are sure you will want to join in for networking, learning, sharing and fun. Register as soon as possible as space is limited. The conference theme, Windows of Opportunity, captures the goal of this exciting conference. The quality training offered at the Sharing a Vision Conference promotes the building of partnerships, implementation of recommended practices, and collaboration in systems change. Whether you're a family member, educator, support staff, local interagency council member, therapist, or administrator, plan to attend the 2002 Sharing A Vision Conference and join together with colleagues and families as we open . . .

Windows of Opportunity.

Pam Reising-Rechner and Lynette Chandler, Conference Co-Chairs

Pre-Conference Sessions . . . Monday • September 29, 2003

Pre-conference meetings are a very important part of the program for Monday, September 29, 2003. From 7:30 am to 5:00 pm, various organizations will meet prior to the Sharing A Vision Conference. Specific session information will be distributed in mailings to invited participants. Should you have any questions about pre-conference sessions or should your organization be interested in holding a pre-conference session, please call Rebecca White at 815/288-5511, Ext. 313. Registration for Pre-conference workshops is separate from Sharing A Vision registration. If you attend a pre-conference workshop and wish to attend the Sharing A Vision Conference, you must register and pay for Sharing A Vision separately.

Access and Equity for All Young Children

Inclusion of young children with disabilities and their families in developmental and educational settings is achieved through collaboration among multiple entities. Participants will discuss the emergence of new roles and relationships as parents, special educators, therapists, and personnel who work in settings designed primarily for typically developing children work together on behalf of all children.

The ACCESS AND EQUITY Project is a collaborative effort between the Illinois State Board of Education, the Department of Children and Family Services, The Department of Human Services, the Illinois Head Start Association, National Lekotek Center, and Office of the First Lady.

Workshop Time: 9:00am-3:00pm with sign in at 8:30 am

For registration information contact STAR NET Region VI,
6020 W. 151st. St., Oak Forest, IL, 60452, 708.342.5370

Conference Schedule at a Glance . . .

Monday•September 29, 2003

4:00 pm – 7:00 pm	Registration
5:00 pm – 7:00 pm	Opening Reception and Exhibits
7:00 pm – 8:30 pm	Opening Session Keynote Address by Barbara Coloroso

Tuesday•September 30, 2003

7:00 am – 4:45 pm	Registration
7:00 am – 8:00 am	Continental Breakfast
7:00 am – 4:30 pm	Exhibits
7:30 am – 4:30 pm	Family Hospitality
8:00 am – 10:00 am	Workshop Sessions I
8:30 am – 11:30 am	Showcasing
10:15 am – 11:45 am	Workshop Sessions II
11:45 am – 1:00 pm	Lunch
11:45 am – 1:00 pm	IDEC Networking Lunch
1:00 pm – 3:00 pm	Workshop Sessions III
1:00 pm – 4:00 pm	Showcasing
3:15 pm – 4:45 pm	Workshop Sessions IV
7:00 pm – 9:00 pm	Evening Presentation by Ralph Covert with Dessert Reception
9:00 pm – 11:00 pm	Late Night Entertainment

Wednesday•October 1, 2003

7:30 am – 11:00 am	Registration
7:30 am – 9:00 am	Continental Breakfast
7:30 am – 1:30 pm	Exhibits
7:30 am – 3:00 pm	Family Hospitality
8:00 am – 8:50 am	Table Talks
8:30 am – 11:30 am	Showcasing
9:00 am – 10:30 am	General Session Keynote
10:45 am – 12:15 pm	Workshop Sessions I
12:15 pm – 1:30 pm	Lunch
1:30 pm – 3:00 pm	Workshop Sessions II

Special Notes: IDEC Membership Luncheon and Meeting will be held Tuesday, September 30 from 11:45 am – 1:00 pm. All IDEC members and those interested in joining IDEC are invited to bring their lunch to this meeting.

Sharing A Vision *contact information:*
Telephone: 217/824-4776 • Fax: 217/824-6819
E-Mail: sharingavision@aol.com
Website: <http://idec.crc.uiuc.edu/conference>

Nominations for the Jeanette A. McCollum Award

During the 2003 Sharing A Vision Conference the Illinois Division of Early Childhood of the Council for Exceptional Children will present the Jeanette A. McCollum Award to an early childhood professional, family member, student, or community member who meets the high standards of professional practice set by Dr. Jeanette A. McCollum, Professor Emeritus at the University of Illinois at Urbana-Champaign. Nominations are being sought for the 2003 award. If you would like to nominate someone who has made a significant contribution on a state, regional, or local level to improving the lives of young children with special needs and/or their families please send a letter of nomination to:

Bernie Laumann, IDEC Past-President
University of Illinois Early Childhood Programs
#61 Children's Research Center
51 Gerty Dr., MC-672
Champaign, IL 61820
Telephone: 217/333-4123
or e-mail blaumann@uiuc.edu

Welcome Families

Once again, Sharing A Vision welcomes families. The SAV Committee recognizes the important role families serve as part of the educational team for young children. Families will have an opportunity to select from sessions on every aspect of early education, with many focused on the family perspective. A special Hospitality Room will be open to give families a place to relax, network with other families, and pick up some information. Families may also win door prizes! Please plan to join us as we learn together. Stipends are available to assist families who wish to attend this worthwhile conference. Because stipends are limited we urge you to ask your child's program before applying for these monies. If you are interested please contact Kathy Ellinor at 815/599-0334.

General Information

Conference Highlights

- Workshops featuring **internationally renowned presenters** on topics of interest to early childhood agencies, program staff and families. **Table Talks** will be offered Wednesday morning.
- Large **exhibitors'** hall featuring local and national vendors will be available.
- Networking with colleagues from around the state who will be sharing their exemplary practices and programs at the **Showcasing** sessions.
- International speaker Barbara Coloroso will present the **keynote address** at the opening session on Monday evening.
- Chicago-based singer-songwriter, Ralph Covert will sing many of his fun and quirky songs during the **evening session** on Tuesday as well as a workshop on Wednesday.
- A unique and informative **general session** on Wednesday morning.
- Two evenings of fun and networking are planned for Monday and Tuesday!

Continuing Education Credits

A variety of sessions will qualify for the following: Continuing Professional Development Units (CPDUs) for teacher recertification through the Illinois State Board of Education; Continuing Education (CE) for Speech-Language Pathologists and Social Workers license renewal through the Illinois Department of Professional Regulation; and Early Intervention Credentialing hours.

It is your responsibility to access and complete the appropriate forms and secure the appropriate documentation for your attendance.

Registration Tips

Attendees are asked to indicate which workshop sessions they will attend so we may accommodate room size needs; however, you will not be held to your choice and choosing a specific session does not mean you will get in on that particular session. Some presentations will be limited in size. Participants need not register for the Table Talks.

We are pleased to offer a wide variety of presenters on popular early childhood topics. Complete the entire registration form and mail your registration and payment early. When registering groups of 10 or more, please send all forms together with payment.

Workshops

Review materials carefully and pre-plan your workshops. Arrive early for general sessions and workshops to ensure a seat. The size of workshops will vary from 40 person capacity to 200 person capacity. **REMEMBER:** Sessions do fill up fast. Have alternative sessions planned in case your first choice is full. Included with the description of each workshop is the age range and level. We hope this will help with your decision to select each workshop.

Environments

This year the committee has determined environments (tracks) for all workshops:

Adapting Environments includes workshops on blending, inclusive environments, English as a second language, assistive technology, special needs, linking IEP/standards, speech/language issues, disorders, projects for all children, visual/hearing issues.

Administration Environments includes workshops on outcomes, inclusive schools, law, advocacy, supporting staff, and adult learning theory.

Community Environments includes workshops on working/supporting with families, diversity, utilizing community resources, taking care of yourself, community collaboration, and early intervention systems.

Infant/Toddler Environments includes workshops geared toward working with infants and toddlers and may include any of the above topics plus brain development and mental health issues.

Learning Environments includes workshops on learning standards, Reggio, Project Approach, literacy, math, universal preschool, science, observation/assessment, work sampling, art, and music.

Peaceful Environments includes workshops on social/emotional development, behavior management, helping children control their behavior, and taking care of yourself.

Technology Environments includes workshops on utilizing technology in the classroom.

Fees and Options

Registration fees include official programmed events; Monday and Tuesday evening receptions (cash bar), continental breakfast on Tuesday and Wednesday morning, conference materials and handouts. Box lunches are available but must be ordered and paid for in advance. All fees must accompany your registration. Registrations will not be processed without payment and complete information. (Purchase orders and credit cards are considered "payment." There is a \$5 surcharge when using these forms of payment.) To qualify for the early bird registration discount, your registration must be postmarked by July 15, 2003. Regular registration deadline is September 1, 2003. Make checks payable to IDEC and mail to:

Sharing A Vision Conference

3705 Lincoln Trail • Taylorville, IL 62568
Phone: 217/824-4776 • Fax: 217/824-6819

Registrations Fees

\$105.00	Early Bird Registration (postmark deadline July 15, 2003)
\$130.00	Regular Registration (postmark deadline September 1, 2003)
\$105.00	Parent Registration (postmark deadline September 1, 2003)
\$180.00	Onsite registration (if available)
\$105.00	Student
\$ 12.00	Box Lunch each day

Conference Hotel

Crowne Plaza Springfield
\$107.50 inclusive of all taxes
3000 South Dirksen Parkway
Springfield, IL 62703
217/529-7777



A limited number of rooms are also being held at the following hotels:

Holiday Inn Express
\$85.70 inclusive of all taxes
3050 South Dirksen Parkway
Springfield, IL 62703
217/529-7777

Days Inn
\$66 plus 10% Tax
3000 Stevenson Drive
Springfield, IL 62703
217/529-0171

Drury Inn & Suites
\$77.99 plus 10% tax
3180 South Dirksen Parkway
Springfield, IL 62703
217/529-3900

Hampton Inn-Springfield
\$77.00 plus 10% tax
3185 S. Dirksen Parkway
Springfield, IL 62703
217/529-1100

Comfort Inn & Suites
\$77.00 plus 10% tax
2620 South Dirksen Parkway
Springfield, IL 62703
217/753-4000

Hotel reservations must be made by September 8, 2003. Please call the hotel directly to make reservations. Please mention Sharing A Vision Conference special rates.

Room Guarantee/Deposits: Rooms must be guaranteed with a major credit card or by mailing a check directly to the assigned hotel. Checks must be made payable to the assigned hotel.

Housing Changes/Cancellations: All changes and cancellations must be made directly with the hotels.

Cancellation and Refund Policy

Conference registration fees will be refunded with a written cancellation request post-marked by September 1, 2001. Refund requests post-marked September 2 through September 15 will be charged a \$50 processing fee. No refunds will be issued for cancellations made after September 15. If you are unable to attend and wish to send a substitute, you may do so at no charge. Requests for substitutes must be submitted in writing. After September 1, substitutions will only be made at the On-Site Registration Area.

Conference Store

The Sharing A Vision Conference Store will once again be raffling off exciting items! Visit the Conference Store during exhibit hours for your chance to win! A card will be included in your conference packet with instructions on how to enter to win. Drawings will be held frequently, so check back often to see if you are a winner. A limited number of SAV thermal lunch bags will be available for sale, also. Good luck!!

Volunteers

Volunteers are needed to assist with many conference activities. In exchange for four hours of donated time, volunteers will receive a complimentary registration. If you are naturally helpful and interested in volunteering call Daphne Southern at 217/525-2805 or email dsouthern@childcaresolutions.org.

Workshop Facilitators

Facilitators will collect workshop evaluations and assist the presenter with room arrangements. This important role guarantees you a seat in a particular session. If you are interested in facilitating, contact Daphne Southern at 217/525-2805 or email dsouthern@childcaresolutions.org. Be sure to do this early because there is only one facilitator per session.

Special Assistance

The Crowne Plaza Springfield is a fully accessible site. Conference staff will be happy to assist you with any special needs (physical, dietary, etc) with a three-week advance notice. Please identify any special needs on your registration form or call 217/824-4776.

Conference site

Crowne Plaza Springfield, 3000 South Dirksen Parkway, Springfield, Illinois.
Directions: From I-55 take exit 94, Stevenson Drive. Head west one block; go north on Dirksen Parkway, 11/2 blocks.

Showcasing

Showcasing provides conference attendees the opportunity to interact, see, and hear what is happening in Illinois for young children and their families. This year, SHOWCASING will again be available during conference sessions. In addition, one free registration will be offered for each Showcasing application selected. You are cordially invited to submit an application to present at a Showcasing session. Contact Brian Michalski for further information and/or an application.

Brian Michalski • The Center: IL Resource Center, Early Childhood

1855 Mt. Prospect Rd. • Des Plaines, Illinois 60018

847/803-4381 • fax 847/803-294 • E-mail: bmichalski@thecenterweb.org

Opening Session Keynote . . .



Barbara Coloroso

Barbara Coloroso is an internationally recognized speaker and authority in the areas of parenting, teaching, school discipline, non-violent conflict resolution and reconciliatory justice. She is an educational consultant for school districts, the medical and business community, the criminal justice system and other educational associations around the world. Barbara has served as a classroom teacher, a laboratory school instructor, and a university instructor. She is the author of two international best sellers: Kids are worth it! Giving your child the gift of inner discipline and Parenting through crisis: Helping kids in times of loss, grief, and change.

Monday • September 29 • 7:00 pm – 8:30 pm

The Bully, The Bullied, and the Bystander — Breaking the Cycle of Violence

Breaking the cycle of violence in our homes, schools and communities involves more than merely identifying and stopping the bully. It requires that we examine the why and the how a child becomes a bully or the target of a bully (and sometimes both) as well as the role the bystanders play in perpetuating the cycle. A deadly combination is a bully who gets what he wants from his target, a bullied child who is afraid to tell, bystanders who either watch, participate in the bullying, or look away, and adults who see bullying as teasing, not tormenting, as 'boys will be boys,' not the predatory aggression that it is. If this combination of relationships is not radically transformed, we have enough incidences in our recent past to convince us that it is not only the bully who can terrorize our community.

Some bullied children, whose cries went unheard, whose pains were ignored, whose oppression went unabated and unrelieved, have struck back with a vengeance and sorrow. Others, who reached what they felt was an utterly hopeless and irretrievable point, have killed themselves. Feeling they had no other way out of the pain and torture heaped on them by their tormentors, no one to turn to, no way to tell, they made a tragic and final exit.

It is easy to point fingers; place blame; fortress our schools; push zero-tolerance plans; mandate a bully awareness week; stiffen penalties for bullying; or simply ignore the problem and hope it will go away. It is more difficult-and necessary-that we as individuals, families, and entire communities create a safe harbor for all of our children. We must do what is necessary to take the weapons out of the hearts, minds, and hands of our kids. We need to give kids the tools to be able to stand up for their own rights while respecting the rights and legitimate needs of others; to handle conflicts nonviolently; to act with integrity when confronted with difficult situations such as peer pressure to cause harm; and to develop a personal code (inner moral code) that gives them the wherewithal to do what is right in spite of external consequences and never merely because of them. No easy task; no simple answers.

Tuesday Evening Program . . .

Tuesday • September 30 • 7:00 pm – 9:00 pm

Tickling Tigers and Licking Lions: The Use of Rhymes, Rhythm and Music to Promote Reading and Enhance Learning

Ralph Covert, Ralph's World

Ralph Covert is a Chicago-based singer-songwriter who has been writing songs since the age of nine. He recalls: "I went off to camp one summer and the counselor played Sgt. Pepper's non-stop for two weeks. When I got back from camp, I knew what I wanted to do with my life!" Since the time of that revelation, he's written literally hundreds of smart, intelligent songs in the pop/rock vein. He's performed all over the country and internationally, both solo and with his former band, The Bad Examples.



Ralph's talent for writing fun, quirky and accessible songs is evident in all of his wonderful recordings. His live performances engage children, entertain adults and energize the room. Welcome to Ralph's World, a place where kids and adults connect through the shared love of music! He teaches songwriting and children's music classes at the Old Town School of Folk Music in Chicago and works as a visiting artist as part of the CAPE program in arts integrated teaching in the Chicago Public Schools for both the Old Town School and Lookingglass Theatre.

During this entertaining evening session, Ralph will share with the audience the value of music to engage and entertain by holding students attention and interest; teach the importance of positive messaging in music; demonstrate songs which can be used for classroom exercises and share creative play and its role in cognitive development.

Workshops

General Session

WEDNESDAY • OCTOBER 1 • 9:00 AM – 10:30 AM

To Be Announced

Workshops

This year the committee has determined conference environments, defined age range for the presentation – 0-3, 0-5, 3-5, 3-8, 5-8, 0-8 and indicated the level of the presentation – Introduction, Intermediate, Advanced. We hope this will help you in selecting your workshops.

Tuesday • September 30

HALF DAY SESSION

TUESDAY AM • 8:00 AM – 11:45 AM

Strategies to Foster Social-Emotional Competence and Reduce Challenging Behavior in Young Children Peaceful (3-8) Introduction

Lynette Chandler, Professor, Dept. of Teaching & Learning, Northern Illinois University

Mary Louise Hemmeter, Professor, Dept. of Special Education, University of Illinois at Champaign

Children often use challenging behaviors such as aggression, yelling, and crying in difficult social situations. During this workshop, strategies to provide positive behavioral and social-emotional support to help children use appropriate behaviors in difficult situations will be presented.

Workshop Session I

TUESDAY AM • 8:00 AM – 10:00 AM

The Effects of Incarceration on Family and Community Community (0-8) Introduction

Joanne Archibald, Advocacy Project Director, Chicago Legal Advocacy for Incarcerated Mothers

The increasing use of incarceration as a response to social problems such as addiction, poverty, and lack of education has affected millions of children. This workshop will provide information about the effects of parental incarceration on young children and discuss strategies for helping children whose lives are disrupted by the arrest or incarceration of a parent.

Adapting Environments for Children with Autism

Adapting (0-8) Intermediate

Allison Beytien, Assistant Project Director, Illinois Autism Training Project

This workshop will demonstrate a variety of visual systems for use with children who have Autism Spectrum Disorders. Ideas for adapting the home, school, community environments to accomplish independence, learning and participation will be discussed.



Ooey! Gooley! Squishy! Plop! Sensory Play for Every Day!

Lisa Murphy

Lisa Murphy, the ooey gooley lady, has been an early childhood educator for over fifteen years working with children in various environments including private preschools, state funded preschools, Head Start programs, kindergartens and family childcare homes. During her two sessions, Lisa will present her signature high-energy workshop, Ooey! Gooley! Squishy! Plop! Sensory Play for Every Day! This interactive presentation of many art and science activity ideas will also provide an in-depth exploration of what it means to be CHILD-CENTERED.

Lisa will describe what child-centered environments look like and discusses the role of her 3E's (Ego, Environment, Experiences) within early childhood classrooms.

After demonstrating many sensory play activities, participants have the opportunity to touch, squish, experience and explore the presented materials!

Be ready to play!



Models of Support for Children with Special Needs

Community (0-8) Advanced

Nancy Brown, Inclusion Consultant, Project CHOICES

Bridget Brown, Student

All people, including people with disabilities, need support and friendships to thrive. Support is especially challenging and critical for individuals with disabilities because they often struggle with developing friendships and social relationships. People who care about individuals with disabilities are often looking for new ways to provide opportunities for friendships to develop between individuals with and without disabilities. In this workshop participants will learn about different models of support that are designed to encourage and enhance social relationships based on respect. New ideas will be explored that empower students to develop relationships and establish friendships. Participants will leave with a new perspective, increased understanding, and hope.

Developing Family Centered Functional Outcomes

Infant Toddler (0-3) Intermediate

Ted Burke, Program Director, Illinois Early Intervention Training Program

Joan Debelak, StarNet Region VI

This workshop is targeted towards professionals working in the Illinois early intervention system and parents of children in early intervention. The focus is on the development of global family centered functional outcomes for children birth to three which can be achieved in the child's natural environment.

Using "Tool" Software with Young Children

Technology (3-8) Intermediate

Center for Best Practices

Computers in early childhood classrooms conjure up images of children using software titles such as Thinkin' Things and Let's Explore the Farm with Buzzy. But maybe we stop too soon and sell ourselves short. Maybe we quit before we consider the unlimited possibilities of using "tool" software. Tool software captures the ideas generated by the most active imaginations and transforms those ideas into interactive multimedia products. Get the "scoop" on an authoring program such as HyperStudio, a concept mapping title like Kidspiration, drawing software such as Kid Pix, and an integrated program like 2simple during this hands-on workshop.

Interactive Mathematics

Learning (5-8) Introduction

Ruth Champagne, Professor of Mathematics, Concordia University

In this hands-on workshop, participants will learn to use techniques and strategies that enable parents and teachers to get immediate feedback from and give immediate feedback to young learners as they use objects, pictures and language to explore mathematics in kindergarten through 3rd grade.

Who Needs Assistive Tech Anyway?

Technology (3-8) Introduction

Marlene Christ, Project Director, StarNet Region VI

This workshop will introduce a guide for collaborative assistive technology decision-making. Included will be a discussion of the definition of assistive technology, selection of appropriate technology, and service delivery in school settings. Participants will identify procedures to assist in determining the need for assistive technology.

TAO of Teaching

Learning (0-8) All Levels

Barbara Coloroso

Our students need our time, our affection, and our sense of optimism in a time when expediency, efficiency, keeping a distance, and pessimism are more commonplace. This workshop will cover ways to help our kids become compassionate, responsible, resourceful, resilient human beings who can act in their own best interest, stand up for themselves, and exercise their own rights while respecting the rights of others. Discussed will be the three elements of integrity and how important these elements are in teaching students to resist being easily led or doing to please; and to stand up for values and against injustices.

Promoting Positive Behaviors When

Working with Young Children

Learning (0-5) Intermediate

Elizabeth Delaney, Assistant Professor of Special Education,

University of Illinois at Chicago

Jeffri Brookfield, Child and Family Development Center, University of Illinois at Chicago

During this workshop, attendees will learn effective techniques for promoting prosocial behavior in early childhood classrooms. The techniques discussed will be based on practices that have been empirically proven to improve children's social-communication skills and decrease noncompliance and aggression.

Getting From Here to There:

Preschool Programs to Kindergarten

Community (3-5) Intermediate

Lisa Fisher, Resource Specialist, StarNet Region II

Sandy Heins Ginther, Early Childhood and Family Specialist, StarNet Regions I & III

Transitions are a time of exiting and entering...leaving and arriving. This workshop will address the knowledge, skills, and strategies needed by the child, family, teachers, administration, and support staff that can make transition to kindergarten successful.

Peek Inside: Creative Environments

Learning (3-5) Introduction

Joan Leff, Early Childhood Resource Specialist, StarNet Regions I & III

Connie Shugart, Early Childhood Resource Specialist, StarNet Regions I & III

In order for young children to actively participate in engaged learning, the environment needs to be inviting, safe and well designed. This workshop will engage participants in designing and evaluating early learning environments.

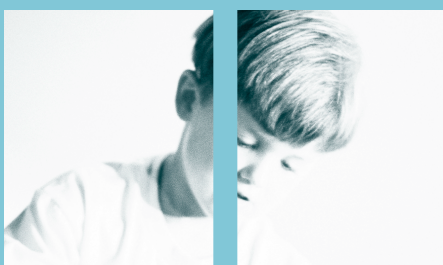
Writing Outcomes 101

Administrative (0-8) Intermediate

Susan Maude, Assistant Professor, Department of Early Childhood Special Education, University of Vermont

Rob Corso, Visiting Professor, Department of Special Education, University of Illinois at Champaign

During this workshop, participants will come to understand how to evaluate the impact or results of a program or agencies' efforts; understand how a conceptual framework using a logic model can assist in the development of any evaluation; learn the eight-step approach for decision making when designing and



conducting an impact evaluation; learn the basics of outcome measurement (how to connect with one's conceptual framework; identify short term, intermediate, and long term outcomes that link to the framework; what is an indicator); and understand how outcome measurement can assist in measuring impact within an organization.

Ooey! Gooney! Squishy, Plop! Sensory Play for Everyday Learning (0-8) All Levels (Repeated Workshop Session III)

Lisa Murphy, the ooey, gooney lady! The Learning Through Adventure Company

This high-energy workshop is an interactive presentation of many art and science activity ideas, facilitating an in-depth exploration of what it means to be a CHILD. Participants will learn what child-centered environments look like and the role of the 3Es (Ego, Environment, Experiences) within early childhood classrooms. After a demonstration of many sensory play activities, participants will have the opportunity to touch, squish, experience and explore. Be ready to play!

Workshop Session II

TUESDAY AM•10:15 AM – 11:45 AM

Once Upon a Time with Mrs. Broccoli

Learning (3-8) Introduction (Repeated Workshop Session IV)

Harriett Arkley, Retired Principal

During this lively session, participants will learn how to get started telling stories by learning a few simple tips and practicing stories that invite participation.

The Software of Math, Science and Social Studies

Technology (3-8) Introduction

Center for Best Practices

This session will provide an overview of quality software that might be used with young children to enhance the areas of math, science and social studies curriculum.

Getting Started with Project Work in Your Classroom

Adapting (3-5) Introduction

Sharon Doubet, Professional Development Facilitator,

Valeska Hinton Early Childhood Education Center

Pam Scranton, Preschool Teacher, Northminster Learning

Center's Discovery Preschool

You have learned about the Project Approach. You have wondered if this style of teaching and learning would work for you and your children. It is time to find out! Learn what you need to know to try your first project from beginning to end. Doing project work with children excites, energizes and motivates teachers and students. What are you waiting for?

Cortical . . . Visual . . . WHAT?

Adapting (0-5) Introduction

Mindy Ely, Vision Specialist, Hearing & Vision Connections

During this workshop, participants will learn how CVI (cortical visual impairment) affects children with brain related issues. We will cover the basics of CVI and how it is diagnosed and what current research has proven regarding successful intervention strategies. We will discuss ways to apply new ideas for encouraging children with CVI to use and understand their vision.

Making Peace with Responsibility

Peaceful (0-8) Introduction/Intermediate

Dina Emser, Certified Professional Coach/Educational Consultant

During this experiential workshop, participants will examine the "rules" we have about responsibility, how to define the word "responsibility," and the expectations we have for ourselves and others regarding "being responsible." Individual leadership styles will be examined to see what each style invites from others. Participants will be challenged with questions to help clarify where they may be taking on more responsibility than is reasonable to assume

Seizure Disorders & Children: Diagnosis, New Treatments and the Family Perspective

Learning (0-8) Introduction/Intermediate

Philip M. Gattone, President, Epilepsy Foundation of Greater Chicago

This workshop is designed to assist educators, administrators, parents, therapists, and others involved in the lives of children with seizure disorders. Participants will gain a greater understanding of various seizure types, proper first aid for seizures, the latest medical treatment options for families, strategies for helping children succeed in the classroom, and a perspective on epilepsy from the viewpoint of parents, children, and caregivers.

Paraeducator Partnerships

Administrative (3-8) Introduction

Ann Kremer, Consultant, Project CHOICES

This interactive workshop will define the role of the paraeducator and how to include the paraeducator on the team. Through defining their roles, teachers and paraeducators can discuss strategies for communicating expectations and information. The workshop will also cover strategies to train paraeducators and support them in their job.

Looking at Literacy in an Early Childhood Setting

Learning (3-5) Introduction

Sherial McKinney, Early Childhood Special Education/

Prekindergarten at Risk Teacher, Industry CUSD #165

During this workshop, participants will be looking into literacy for young children that meets the Illinois Early Learning Standards and DAP and sharing ideas that have worked in early childhood settings.

Science Is Everywhere: At Home Science Activities

Community (3-5) Intermediate

*Robert Rockwell, Professor Emeritus, Southern Illinois University
Edwardsville*

Janet Kniepkamp, Classroom Teacher 3rd Grade, Columbia, Illinois
Sharing science with children should not be limited to classroom experiences only. There are numerous science learning opportunities that can be found throughout most communities. During this workshop, participants will discuss and interact with practical clear science learning opportunities that can be utilized in both the child's home and surrounding community environment.

Caring for the Caregiver: Who Is Watching the Kids? Getting a Grip on Stress

Peaceful (0-8) Introduction/Intermediate

*John Roope, Director of Family Education,
Chaddock Child & Family Center*

Taking care of ourselves is not just a luxury to be indulged only when everyone else's needs have been met. It is a responsibility that must be met first if we are to be effective. Intended for teachers, directors, parents, and others, this workshop is aimed at helping those who care for children care for themselves in a productive way.

Looking at Children with New Eyes: Sensory Integration and Sensory Processing

Learning (0-8) Introduction

Jennifer Rosinia, KidLinks Unlimited, Inc.

All behavior has meaning! It is our job as parents and teachers to interpret the behavior of the children in our care in order to better understand them, plan activities for them, care for them, and teach them. In this workshop, participants will learn about the "lesser known" senses of vestibular and proprioception, the interrelated components of sensory processing and the concept of sensory threshold. The possible meaning of specific behaviors and how to help the children who demonstrate these behaviors will also be discussed.

More On the Illinois Early Learning Standards and Assessment

Learning (3-5) Intermediate

Jodi Scott, Consultant, ROE 27, 28 & 49

Participants will be updated on the Illinois Early Learning Standards and assessment. A brief description of what they are and how they were developed will take place as well as discussion on the importance of standards and how they can be helpful.

Accessing Community Resources

Community (0-8) All Levels

Sandy Valentine, Resource Specialist, StarNet Regions I & III

When Sandy's youngest son Jack was diagnosed with autism, the diagnosing physician advised them to bombard him with people, places and events. Follow the journey that got the community involved with Jack and how this mom went about coordinating valuable resources in her own backyard. Participants will get resources and ideas on how to improve the lives of all children; especially ones with special needs.

Laugh, Lighten Up & Live

Community (0-8) Introduction

*Vivian VanDonk, Professor, Department of Speech Communications,
Joliet Junior College*

Participants will gain a reminder of how important a positive attitude can be in all aspects of their lives. They will reacquire themselves with their inner child and learn a few new techniques to cope with the pressure and stress of being an educator or a parent of a child in an early childhood program.

Conversations with Infants and Toddlers: Nourishing Language and Literacy Development in Early Care Settings

Infant Toddler (0-3) Intermediate

*Char Ward, StarNet Regions I & III
Heidi LaBounty, Program Director/Teacher,
Seeds of Faith Early Learning Center*

During this workshop, participants will explore strategies that support the language and literacy development of infants and toddlers through conversations within daily routines, interactions with books, and play experiences.

Workshop Session III

TUESDAY PM • 1:00 PM – 3:00 PM

Sustaining Relationships: A Different Perspective

Community (0-8) Intermediate

Jennifer Bollero, Esq.

This workshop will explore how professionals and parents can use time-honored negotiation skills to foster a team approach to educational planning for children with disabilities.

A Kitchen Table Map and Other Person Centered Planning Tools

Community (0-8) Advanced

Nancy Brown, Inclusion Consultant, Project CHOICES

Bridget Brown, Student

A MAP helps us find our way and direct our course. A MAP is also a person-centered planning tool designed to help individuals with disabilities design positive and possible futures. The MAP process helps individuals and families look at their dreams, identify gifts and strengths, walk into the future and describe the best possible life, and create an action plan that will get people to a place where they can touch their dreams. This process is usually facilitated in a large group setting but in this workshop participants will learn how to use it as a personal and small group planning process. Participants will learn how to help individuals with disabilities present on behalf of themselves. A young teen with a disability will present on behalf of herself using this process. She will present and describe the process she uses to design positive and possible futures for herself. Parents, educators, administrators and advocates will learn how to use the MAP/s process in a variety of different ways including at your kitchen table.

Picture This!

Technology (3-8) Introduction

Center for Best Practices

This introductory session will show participants how to begin using scanners and digital cameras and getting the most from the software that comes with these devices.

Transition in Rural Districts

Community (0-5) Introduction/Intermediate

Julie Cotter, Program Supervisor, Livingston County

Special Services District

Tina Butterbrodt, Early Childhood Special Education Teacher,

Dwight School District

This workshop will teach how to assure a smooth transition to school district programs from Birth to 3 and other agencies in the rural setting. All 13 member school districts in Livingston County use the same transition process for children being considered for special education at the age of 3 years. The community service providers are all trained in the folder system which assures collaboration, cooperation, and compliance with the law.

Work Sampling System in Illinois: You Can Do It!

Learning (3-5) Intermediate

Kathy Davis, Parent Coordinator

Jill Johannes, PreK Teacher

District 186 Early Start Prekindergarten

This workshop will review the components of the Work Sampling System in Illinois and provide support to teachers through examples and discussions of personal experiences,

common obstacles and suggestions to overcome such obstacles. Participants will also learn practical, proven strategies for successful implementation that will encourage them to use the WSSIL for authentic assessment in their classrooms. Participants should have a working knowledge of the WSSIL assessment system and the Illinois Learning Standards.

The Project Approach: Children and Teachers Investigate Learning (3-5) Introduction/Intermediate

Barb Gallick, Head Teacher, Illinois State University Child Care Center
Conference attendees will learn about how the project approach is implemented in a mixed-age classroom with 3-5 year old children. Using examples from a variety of projects, attendees will learn the phases of project work and find out tips on implementation.

Exploring Ways the Environment Supports Learning and Relationships for Young Children

Learning (0-8) Introduction

Karen Haigh, Director of Programs, Chicago Commons Association

Participants will identify the many ways environmental elements influence young children's learning and relationships. Elements discussed will be the role of color, transparency, entranceways, common areas, light, nature, identity and community, socialization, levels, objects to explore and wonder about, storage and organization of materials, documentation and displays, real furniture and items, various boundaries, and the importance of small details.

Asian American Families: Culture, Education and Ethnicity Community (5-8) Intermediate

Susan Matoba Adler, Assistant Professor of Early Childhood

Education, University of Illinois at Champaign

During this workshop, participants will examine cultural diversity, stereotypes, and expectations of Asian American parents. They will reflect on their current school/center demographics, their knowledge of cultural difference, their own experiences and values about diversity, and their communication styles.

Ooey! Gooley! Squishy, Plop! Sensory Play for Everyday Learning (0-8) All Levels (Repeat)

Lisa Murphy, the ooey, gooley lady! The Learning Through Adventure Company

Identifying Communication Disorders in Young Children Adapting (0-8) Introduction

Debra Reichert-Hoge, Professor, Department of Special Education and Communication Disorders, Southern Illinois University Edwardsville

Speech-language disorders are among the most frequently identified disabilities in young children. The ability to identify, refer and intervene as a practitioner will be discussed.

The Impact of Deafness on Young Children in Illinois Adapting (0-5) Introduction

Nancy Scott, Hearing Specialist, Hearing & Vision Connections

Participants will better understand the implications of a hearing loss on young children and the support and services available in Illinois. This workshop is a Deafness 101 session to learn the basics of hearing loss. Simulation and discussion on how to prevent the pyramid of deficits through timely identification, intervention and family support will be included.

**Not Being Able to Speak Is Not the Same
as Not Having Anything to Say**

Adapting (0-8) Introduction

Mandy Seagroves, Educational Consultant, Project CHOICES

This interactive session explores the critical component of communication in general education classrooms. For some students, communication is their greatest challenge, creating difficulties in all aspects of life. This workshop explores a variety of communication strategies including PECS, facilitated communication, and visual schedule.

**Dealing with Stress: When Your Tightrope is Slippery,
Use Skates**

Peaceful (0-8) Introduction/Intermediate

Valerie Sims Rucker, School Social Worker

This workshop focuses on parents and caregivers who feel as if they walk a daily tightrope to provide ongoing care and support for a child with special needs. The session will incorporate experiential activities and hands-on materials to help participants learn various stress reduction techniques aimed at helping them glide with ease across that rope when it becomes slippery.

Working with Hard to Reach Families

Community (0-3) Intermediate

Delores Wedgeworth, Ounce of Prevention

This workshop will look at how to reach families who do not want to be reached but who have social/emotional and economic needs that need to be addressed in a qualitative manner.

**Building a Classroom Community: A Focus on Children's
Social/Emotional Development**

Peaceful (0-5) Introduction

Carol Weisheit, Resource Specialist, StarNet Regions I & III

Joan Leff, Early Childhood Resource Specialist,

StarNet Regions I & III

This workshop will concentrate on the importance of developing a community atmosphere in the early childhood classroom. Children's developmental milestones will be discussed as well as the role teachers play in recognizing a child's social/emotional needs throughout the course of daily classroom routines.

**Developing and Using Birth to Three Program Standards:
New Ideas, New Relationships, New Results**

Infant Toddler (0-3) Intermediate/Advanced

*Audrey Witzman, Principal Consultant, Early Childhood Division,
Illinois State Board of Education*

This workshop will share the process Illinois used to develop Birth to Three Program Standards and results from programs which piloted the Standards. Examples of Standards and Quality Indicators will be shared as well as portions of the Resource Guide developed to assist staff with implementation of the Standards.

Workshop Session IV

TUESDAY PM•3:15 PM – 4:45 PM

**Once Upon a Time with Mrs. Broccoli
Learning (3-8) Introduction (Repeat Session)**

Harriett Arkley, Retired Principal

Technology Open Lab

Technology (3-8) All Levels

Center for Best Practices

This session will give participants an opportunity to explore the various software and experiment with a variety of peripheral devices.

Membership Not Visitorship

Adapting (0-8) Intermediate

Sheri Cook, Trainer, H.E.A.R.

Charlotte Denight, Trainer, H.E.A.R.

This workshop is designed to address various concerns regarding the inclusion of students who are deaf and hard of hearing. The main focus is on ways to adapt the environment, including barriers and solutions for inclusion, critical supports and resources related to inclusion, legal considerations, and parent participation.

**The Power of Project Work: Responding to Children's
Special Needs**

Learning (3-5) Introduction

Sharon Doubet, Professional Development Facilitator,

Valeska Hinton Early Childhood Education Center

*Pam Scranton, Preschool Teacher, Northminster Learning
Center's Discovery Preschool*

Supporting young children with special needs in project work is an exciting and meaningful experience for everyone involved. We will discuss each developmental domain and share strategies, sample IEP goals, and examples of project work. If you want to support your students in engaged learning while meeting IEP goals and Early Learning Standards – join in for a fast-paced tour of the Project Approach!

Overview of the Illinois Early Intervention System

Infant Toddler (0-3) Introduction

*Janet D. Gully, Chief Bureau of Early Intervention, Illinois
Department of Human Services*

Kathy Ellnor, Child & Family Connections and Parent

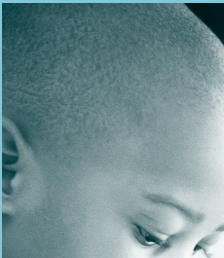
This workshop will be an overview of the EI System from the state's perspective and from a parent liaison's perspective. The workshop is designed to enable participants to have a better understanding of early intervention.

Creating a Peaceful Infant/Toddler Environment

Peaceful/Infant Toddler (0-3) Intermediate

Marsha Hawley, Infant Studies Program, Erikson Institute

Young children are vulnerable to the physical and human environment, yet they are unable to control it and are often frightened or frustrated. Participants in this workshop will learn techniques to create a peaceful environment, and ways to give the message that the place where you are is a safe place to young children.



Taming the Transition Confusion: Moving From Early Intervention to Early Childhood

Infant Toddler (0-5) Introduction

Sandy Heins Ginther, Early Childhood and Family Specialist, StarNet Regions I & III

Pat Kluzik Stauch, Parent Resource Specialist, StarNet Region III

Parents and professionals involved in the transition of young children will learn about the similarities and differences between Part C (early intervention) and Part B (3-21) of the Individuals with Disabilities Education Act (IDEA '97). Discussion will take place on the Illinois State Board of Education School Regulations and the Illinois Department of Human Services procedures that significantly impact transition.

Collaboration — Successful Teaming

Adapting (3-8) Introduction

Ann Kremer, Consultant, Project CHOICES

Bill Peters, Consultant, Project CHOICES

Cheryl Crosby, Consultant, Project CHOICES

This interactive workshop will explore the complexities of collaborative partnerships. Participants will examine their own relationships with others and gain insights to assist them to solve problems that may arise as a member of a collaborative team.

Making Math Marvelous and Meaningful

Learning (3-5) Introduction

Sherial McKinney, Early Childhood Special Education/ Prekindergarten at Risk Teacher, Industry CUSD #165

Come find some ways to incorporate geometry, numbers, measurement and other mathematical thinking with young children and HAVE FUN TOO! There will be hands-on activities and ideas presented that are based on the Illinois Early Learning Standards and current research. Participants will walk away with ideas that will make mathematics fun, meaningful and marvelous for the children you work with.

Shorter Than a Snooze: Quick & Effective Staff Development Ideas

Administrative (0-5) Intermediate

Debra Reichert-Hoge, Professor, Department of Special Education and Communication Disorders,

Southern Illinois University Edwardsville

Camille Catlett, Investigator, Frank Porter Graham Child Development Center

Supporting the development of a capable and confident workforce to serve young children and families requires ongoing effort. This workshop will share ideas for videos, activities, games and other fun and engaging ways to enhance the skills of early care and education personnel. Areas of emphasis will include speech and language development, early brain development, cultural and linguistic diversity, inclusion, and environments.

Partnering with Parents: Planning and Conducting Family Meetings that Involve Parents in the Early Learning Process

Learning (3-5) Intermediate

Robert Rockwell, Professor Emeritus, Southern Illinois University Edwardsville

Janet Kniepkamp, Classroom Teacher 3rd Grade, Columbia, Illinois

Providing an effective strategy to establish a connection between the home and the school allows families to have a valued interaction and meaningful presence in the early childhood program. During this workshop, participants will develop an understanding of this strategy and will be informed as to obstacles that can hinder parent attendance at school meetings and learn strategies to avoid such. Attendees will participate in a hands-on family meeting which allow them to duplicate and or adapt the meeting model to their own program.

Don't Get Drawn In — How to Stay Out of Power Struggles with Children
Peaceful (0-8) All Levels

*John Roope, Director of Family Education,
Chaddock Child & Family Center*

This workshop will provide practical strategies and language for diffusing and preventing power struggles while building relationships with children. Help children become partners in the process of learning to control their own behavior and by providing an excellent framework for consistency and support between home and classroom or other setting.

Stability Precedes Mobility: Motor Development Workshop
Infant Toddler (0-3) All Levels

Jennifer Rosinia, KidLinks Unlimited, Inc.

In this workshop, participants will discuss and experience the development of gross and fine motor skills during the first three years of life. Issues of muscle tone, range of motion, strength, and coordination will be examined. Participants will learn the ways in which motor skills build upon previously developed skills and experience the importance of lesser-known, but vitally important motor skills such as weight shifting and trunk rotation. Handling and positioning will be demonstrated and discussed while participants learn strategies and techniques they can incorporate into their work with all children in their care.

Autism 101

Learning (0-5) Introduction

Sandy Valentine, Resource Specialist, StarNet Regions I & III

During this workshop, participants will better understand the young child diagnosed in the Autistic Spectrum. Strategies for communication, behavior, and social opportunities for home and classroom will be demonstrated.

Good Game Strategies: How to Be An Effective Member of the Team and an Effective Parent Advocate

Community (0-8) Introduction

*Vivian VanDonk, Professor, Department of Speech Communications,
Joliet Junior College*

Lori Motsch, Assistant Principal, Cherry Hill School

Participants will gain insight into creating successful relationships with professionals in their own school districts. Content of this workshop includes the parent's role in developing the IEP, collaborating with professionals, and tips and techniques that every parent needs to know to focus on positive outcomes for their child.

Don't You Be the Weakest Link

Administrative (3-8) All Levels

Chris Wasik, Project CHOICES

Participants will discuss and learn better advocacy skills as well as learn about mistakes parents make during the IEP process, evaluations and keeping the IEP on track.

Sexual Abuse Issues: What Child Advocacy Programs Provide to Children

Community (0-8) Introduction

Mary Whitaker, Children's Advocacy Center

Wednesday•October 1
Workshop Session I

WEDNESDAY AM•10:45 AM – 12:15 PM

Natural Allies: Collaborative Efforts to Grow an Early Childhood Workforce to Serve All Young Children In Illinois
Community (0-5) All Levels

Camille Catlett, Investigator, Frank Porter Graham Child Development Center

Alison Drake, Coordinator of Early Childhood Education and Care Program, College of DuPage

Wendy Mertes, Coordinator of the Early Childhood Education Program, Harper College

Rebecca Miller, Illinois Community College Board

*Tweety Yates, Assistant Professor/Project Director,
University of Illinois at Champaign*

Natural Allies is a project that is bringing early childhood and early intervention faculty and other colleagues together to meet increasing demands for well-trained personnel to deliver quality services to young children with disabilities in inclusive community settings. Participants in this workshop will learn more about the Natural Allies project, hear about plans for implementing the project in Illinois and learn about resources that can help support the development of all young children on their campus or in their community.

Your Preschool Computer Center: How Does It Measure Up?
Technology (3-5) All Levels

Center for Best Practices

This session will examine critical areas in arranging a computer center in your classroom. Where should the monitor be located? How many chairs should be available at the computer? How accessible is the computer center?

Ralph's World

Learning (0-8) All Levels

Ralph Covert, Ralph's World

Kids' music isn't just for kids anymore. The truly great kids' tunes tap into something inherently playful and childlike, and because of that, they appeal to children of all ages. Join the inimitable Ralph Covert as he continues to share his groundbreaking brand of exuberant children's music entertaining and energizing the audience.

Supporting Infant/Toddler Staff: Credentials, Career Paths and Professional Development
Infant/Toddler (0-3) Advanced

*Julia DeLapp, Assistant Manager, Birth to Five Project,
Ounce of Prevention*

Explore with your colleagues the professional development needs of infant/toddler staff and discuss the gaps in Illinois' current training and higher education system. Discussions will take place on the implications of a new early childhood career lattice and attendees will contribute to the development of a new statewide Infant/Toddler Credential.

Help! These Kids Don't Speak English

Community (3-5) All Levels

Sue Ervin, Principal, Thomas Jefferson Early Childhood Center
During this workshop, a variety of programming options for ESL students will be introduced as well as dealing with ESL students in an English speaking class where the adults do not speak the child's language.

Getting Joey Out From Under the Sensory Table: Understanding the Hidden Message of Children's Inappropriate Behavior

Peaceful (3-8) Introduction/Intermediate

Elizabeth Frisbie, Child Behavior Consultant, Education for Change
Understanding WHY children behave inappropriately is the basis for this workshop. Attendees will explore the underlying messages of inappropriate behaviors and discover how to prevent behavior problems by responding to these messages.

No Child Left Behind

Administrative (3-8) Intermediate

Gail Lieberman, Interim Manager, Illinois State Board of Education
This informative workshop will address the No Child Left Behind Act of 2001 and what it means for Illinois students, families, and educators.

Ages and Stages Questionnaires:

A Parent Completed, Child-Monitoring System

Learning (0-3) Introduction

*Lynn Liston, Coordinator of Pediatric Outpatient Services,
Rockford Health Systems/Children's Medical Center,
Dept. of Child Development and Behavior*

The ASQ is a parent completed questionnaire that screens for general developmental milestones and social-emotional behaviors. Participants in this workshop will receive general information regarding test development, reliability, validity, and accuracy of parental reports. Participants will learn how to score the questionnaires and the criteria used to make appropriate referrals.

H.U.M. for Toddlers

Learning (0-3) Introduction

Carole Peterson, Music Specialist, Macaroni Soup
Highly Usable Music for the younger set. Lap songs, finger plays and movement activities to stimulate new neural pathways in 1 and 2 year olds. Learn more than "some new songs" – learn HOW and WHY things work so that you can adapt "make what you already know" work even better! Toddlers can dance; they can shake – get the giggles going with fun music you can use tomorrow!

Math for Preschoolers

Learning (3-5) Introduction

Terry Piper, Lakeshore Learning Materials
A fun, hands-on workshop that begins with pre math activities including matching, patterning and sequencing. Fun activities for counting and non-traditional measurement will be provided.

Supporting Families in High Quality Community Early Childhood Programs

Community (0-8) Introduction

*Michele Robinson, Early Childhood Education Instructor,
Harper College*

This workshop will examine effective strategies for building strong partnerships with families. Learn how differences in learning styles and intelligences can affect the ways in which we communicate with families. Interested in raising the level of quality of your programs and reducing conflict with families? This workshop provides an opportunity for self-assessment in an effort to improve the quality of relationships with families in your programs.

Early Childhood Mental Health Consultation in Childcare Settings

Peaceful (0-5) Intermediate

*John Roope, Director of Family Education,
Chaddock Child & Family Center*

Margarita Paredes, Early Childhood Mental Health Consultant
Are you worried about the behaviors of some of the children in your care? Would you like to help? This workshop will provide an overview of a current DHS funded pilot program offering mental health consultation to child care providers serving children 0-5 and their families. This pilot is designed to help child care providers address the social-emotional development of children in their care.

The Technology Revolution: Helping Students with Special Learning Needs Be More Independent

Technology (3-8) All Levels

Cilla Sluga, Director of Training, Illinois Assistive Technology Project
We would not survive in this day and age without technology support. It's high tech and complicated, like computers; it's also low-tech and simple to use, like Velcro closures on tennis shoes. This workshop will focus on low technology classroom materials for young children...including many "homemade" objects made from everyday products. Teachers and parents can find the technology a child needs to be more independent.

Developing a Reggio Environment for Infants and Toddlers Infant Toddler (0-3) Introduction

*Marian Volz, Child Development Specialist,
Heartland Community College*
*Carissa Carlson, Child Development Specialist,
Heartland Community College*

Linking Curriculum and Assessment in Early Childhood Classrooms

Learning (3-5) Introduction

*Maureen Whalen, Early Childhood/Special Education Administrator,
Woodford County Special Education Association*

Participants will focus on three questions: Current knowledge – What do I know about child development, student needs, expected milestones, and interventions for at risk or students with special needs? Current practices — How am I planning the day, the environment and my lesson plan book? Philosophy — Why are the Illinois Early Learning Standards and authentic assessment the best methods for young children? Participants will view a planning-teaching assessment system which is directly linked with the early learning standards and the work sampling system.

Workshop Session II

WEDNESDAY PM • 1:30 PM – 3:00 PM

Technology Open Lab

Technology (3-8) All Levels

Center for Best Practices

This session gives participants the opportunity to explore the various software and experiment with a variety of peripheral devices.

Ideas for Making Inclusion Work

Administrative (3-8) All Levels

Mark Doyle, Consultant/Owner, Everyone Is Welcome

The inclusion of students with disabilities into classrooms continues to be a challenge that most educators face. This workshop will explore the strategies and components to making inclusion work. The essential attributes of successful inclusive schools and how inclusion compliments and enhances other school reform initiatives will be discussed.

When Children Challenge & Tots are a Terror: Understanding & Managing Angry Young Children Peaceful (3-8) Introduction/Intermediate

Elizabeth Frisbie, Child Behavior Consultant, Education for Change

During this workshop, anger from a developmental perspective will be discussed and the roots of intense anger in young children will be examined. Emphasis will be placed on practical intervention strategies to manage young children's angry outbursts and ways to teach children to appropriately express their anger.

Work Sampling: A System of Performance Assessment for Young Children

Learning (3-5) Introduction

Barbara Grace, Director, Southern Region Early Childhood Programs

Participants will have the opportunity to explore the components of work sampling; developmental checklists; child portfolios and summary reports for parents. An overview of work sampling will be shared, along with opportunities for questions and conversation.

Using Portfolios to Track Children's Progress on Illinois Early Learning Standards and Plan Curriculum Accordingly Learning (0-5) All Levels

Gaye Gronlund, Early Childhood Consultant, ECE Consulting, Inc.

Focused Portfolios™ includes photos, observational notes and children's work samples organized in an easy to implement assessment system. This workshop will help teachers relate portfolios to the Illinois Early Learning Standards and learn ways to track children's progress in accomplishing those standards. Time for practical tips to fit portfolio collection in busy classroom life will be included.

Different Children, Different Needs

Adapting (0-8) Intermediate

Barb Hocking, Birth-3 Program Coordinator;

Niles Township District for Special Education #807

All children have special needs. We read children's signals to gain an understanding of the uniqueness of each child. We maximize opportunities for learning and interaction based on differences in the areas of communication, behavior, and learning styles. Participants will explore how these three components affect learning and how teachers can incorporate modifications into their classrooms.

Ages and Stages Questionnaires Social-Emotional Screener (ASQ-SE): A Parent Completed, Child-Monitoring System for Social-Emotional Behaviors

Learning (0-5) Intermediate

Lynn Liston, Coordinator of Pediatric Outpatient Services,

Rockford Health Systems/Children's Medical Center;

Dept. of Child Development and Behavior

The ASQ-SE is a parent completed questionnaire that screens for general developmental milestones and social-emotional behaviors. Participants in this workshop will receive general information regarding test development, reliability, validity, and accuracy of parental reports. Participants will learn how to score the questionnaires and the criteria used to make appropriate referrals.

Relating IEP Goals to the Illinois Early Learning Standards

Administrative (0-8) All Levels

Vaughn Morrison, Consultant

An overview of strategies for writing meaningful and productive IEP goals and objectives will be addressed from both the legal and practical sides. How to use the Early Learning Standards to meet the needs of young children when developing their IEPs will also be discussed.

H.U.M. — Highly Usable Music

Learning (3-5) Introduction

Carole Peterson, Music Specialist, Macaroni Soup

Bye bye, Eency Weency Spider! Re-energize your repertoire with songs and movement activities you can use next week and all year long! Miss Carole's highly energetic presentation includes how to format a dedicated music time, ideas for felt board songs, "Ten Terrific Techniques" – methodology that works, and instruments you can make for the whole class. Something for all styles of learning: visual, auditory, and kinetic.

Computers, Technology, and Early Learning

Technology (3-5) Introduction

Pam Ross, Director of Training and Education, UCP Chicago-Infinitec

When can a child begin to use a computer? What kind of software is available? What can a young child do with a computer? This workshop will look at all of these issues, as well as provide an overview of appropriate hardware, input devices and software for young children. This session will also look at ways to creatively use a computer with children between the ages of 3-5 years old in a classroom or home setting.

Resolving Conflicts Between Parents and Educators

Community (0-8) All Levels

Al Smith, Consultant, Project CHOICES

This workshop will focus on strategies and skills to help parents and educators manage differences in IEP meetings and conferences...reducing defensive communication; increasing supportive communication; separating people from the problem; focusing on interests instead of positions and using an unconditional constructive approach to resolving conflict.



Praise Versus Encouragement: Developing an Encouraging Classroom Atmosphere

Peaceful (0-5) Intermediate

Carol Weisheit, Resource Specialist, StarNet Regions I & III

The importance of providing an encouraging classroom is based on the daily routine. This workshop will examine the difference between praise and encouragement through small group discussion, video and small group activities.

Blending Classrooms — Meeting the Needs of All Learners

Adapting (3-5) Introduction

Maureen Whalen, Early Childhood/Special Education Administrator, Woodford County Special Education Association

During this workshop, participants will review a model that highlights issues to consider when blending students and classrooms including finances, student ratio, IEP's, related services, and more. Inclusion/LRE and IDEA will be highlighted. Examples of intervention/accommodations and feedback from staff and parents will be shared.

Making Emotional Connections: Supporting the Development of Infants and Toddlers

Infant Toddler (0-3) All Levels

Tweety Yates, Assistant Professor/Project Director, University of Illinois at Champaign

This workshop will show how responsive relationships are the context for how infants and toddlers learn. Strategies and ideas for working with families to promote the development and mental health of infants and toddlers will be discussed. Specific plans and activities for home visits and/or parent-child group settings will be shared.

Career Corner

Are You Looking for a New Job or Looking to Fill a Vacancy?

The Sharing a Vision Career Corner is new for 2003. It's simple. If you are seeking a potential employee, bring along a current vacancy listing as of Sept. 29, 2003 or colorful flyer to pin up on the Career Corner bulletin board. For a speedy response bring plenty of copies but don't forget to include an agency contact name. If you're looking for a job . . . check the bulletin board, daily, during the conference and be sure to inform the potential employer how you found out about the vacancy. Be sure to bring copies of your resume.

For more information on inquires contact:

Madelyn James
Career Corner Chair
(773) 553-3369
email: mjames@lekotek.org

Mary Kay Hawley
(618) 635-3498
email: khawley@yahoo.com

Be sure to inform the potential employer how you found out about the vacancy.

Table Talks

Table Talks will give attendees the opportunity to discuss "hot" topics and will be featured on Wednesday morning from 8:00 am – 8:50 am. Pick up your breakfast and attend the informative and interesting Table Talks. Look in your Conference Guide for topics and presenters.

Springfield Visitor's Information

Springfield is a modern metropolis with small town charm. Over one million visitors a year come to see Springfield's historic Lincoln sites, which include the Lincoln Home and Neighborhood, Lincoln-Herndon Law Offices, Lincoln Tomb, Lincoln's New Salem, and more. Other attractions include the Dana-Thomas House, the Old State Capitol, the Illinois State Capitol and the Executive Mansion. Plans are now underway for a Lincoln Presidential Library and Interactive Museum.

Only In Springfield . . . Health conscious beware, only in Springfield will you find the "horseshoe sandwich," created in 1928 at the old Leland Hotel. Named for the shape of the ham once used to top this open-faced sandwich, it features a secret cheddar cheese sauce lavishly poured over meat of your choice (hamburger and turkey are popular) and topped with a generous pile of french fries, which represent the nails of the horseshoe. On display in the lobby of the Old State Capitol Building, rests the only original copy of Lincoln's Gettysburg Address that contains the words "under God". Written in Lincoln's own handwriting, the manuscript was purchased in 1944 by school children from all over the state of Illinois who donated their pennies to buy the special gift for the state.

We hope SAV participants will find time to take advantage of a few of the many historical and cultural opportunities offered in Springfield, the "city Lincoln loved." For more information or a Family Vacation Planning Kit, contact the Springfield Convention and Visitors' Bureau at 800/545-7300 or www.springfield.il.us/visit.

Join Illinois DEC Today!

The Illinois Subdivision of the Division for Early Childhood (DEC) of the Council for Exceptional Children (CEC) is a non-profit organization advocating for individuals who work with or on behalf of children with special needs, birth through age eight, and their families. Founded in 1973, the Division is dedicated to promoting policies and practices that support families and enhance the optimal development of children. Children with special needs include those who have disabilities, developmental delays, are gifted or talented, and are at risk of future developmental problems.

Share in the richness of the IDEC experience. Get the training, resources, and peer-to-peer support you need to meet today's new challenges in special education with confidence and greater competence and make a difference for young exceptional children and their families.

For more information and a membership application to join IDEC, visit our Website at <http://idec.crc.uiuc.edu/> or contact:

Tweety Yates, Membership Chair
61 Children' Research Center
51 Gerty Drive • Champaign, IL 61820
217/333-4123

Sharing A Vision: Windows of Opportunity

September 29-October 1, 2003

Crowne Plaza Hotel • Springfield, Illinois

Questions regarding registration or the conference?

Contact Susan Ferry 217/824-4776

or email sharingavision@aol.com



Creative Expressions Art Gallery

This year, as an added attraction, the 2003 Sharing A Vision Conference will feature an exhibit and silent auction of young children's artwork that will be gathered from around the state of Illinois.

Where: Crowne Plaza Hotel, Springfield, Illinois

When: September 29, 30 and October 1, 2003

In order to make this a successful event, we are requesting donations from students who are enrolled in early childhood programs. Items will be collected from January through May 2003. No items will be accepted after May 31, 2003.

PLEASE NOTE

- Select items that show creativity and originality.
- No items will be returned.
- Conference participants will have an opportunity to bid on exhibited items.
- All funds collected from the sale of items and the silent auction will be used to support the Sharing A Vision Conference.
- A signed parental consent form must accompany each item. Your STAR NET representative will provide you with a permission slip.
- A signed letter of authenticity will accompany each item. We will send you a certificate to have "autographed" by the artist if the item is chosen for the art gallery.

CRITERIA

- Three-dimensional objects cannot exceed 8.5" X 11" base, 24" high
- Media: clay, paper, wood, metal, plastic, etc.
- Paintings, drawings and collages cannot exceed 16" X 20"
- No fragile items (must be transportable)

Contact one of your local STAR NET representatives to make arrangements for the delivery of quality art gallery items.

Gary Dozier

800/942-7827

618/397-8930

Gdozier@stclair.k12.il.us

Maria Hadley

309/451-3110

Mhadley2@earthlink.net

Heidi Ong

773/535-0113

Hong@csc.cps.k12.il.us

Sharing A Vision: Windows of Opportunity

September 29-October 1, 2003 • Crowne Plaza Hotel • Springfield, Illinois

C O N F E R E N C E R E G I S T R A T I O N

Registration/Badge Information

First Name: _____

Last Name: _____

Name for badge: _____

School/Agency: _____

Mailing Address: _____

City: _____

State: _____ Zip: _____

Work Phone: _____

Home Phone: _____

Fax: _____

Email Address: _____

Position: ____ Parent ____ Staff ____ Administrator ____

Other _____

Program (in which you are employed or your child currently attends)

____ Birth-3 Early Intervention

____ Birth-3 Prevention Intervention

____ Child Care

____ Child Care Center

____ Prekindergarten at Risk

____ Community Preschool

____ Even Start

____ Head Start

____ Early Childhood Special Education

____ Elementary: Kindergarten-3rd Grade

____ Other: _____

First Time Conference Attendee ____ Yes ____ No

Registration

Registration Fees are the same whether attending one day or two days. On-site registration will only be accepted if space allows.

____ \$105.00 Early Bird Registration (postmark deadline July 15, 2003)

____ \$130.00 Regular Registration (postmark deadline September 1, 2003)

____ \$105.00 Parent Registration (postmark deadline September 1, 2003)

____ \$180.00 Onsite registration (if available)

____ \$105.00 Student

Lunch

____ \$ 11.00 Tuesday (On-Site) Box Lunch

Please indicate choice:

____ Turkey/Swiss on Whole Wheat

____ Fruit Salad Plate

____ \$ 11.00 Wednesday (On-Site) Box Lunch

Please indicate choice:

____ Fresh Veggies on Kaiser Roll

____ Chicken Caesar Salad

Method of Payment

Payment is due with registration form.

Total Amount Due \$ _____

Please check one:

____ Enclosed is check payable to IDEC

____ Enclosed is purchase order

____ Charge to the following card:

MC _____

Visa _____

*Please note: There is a \$5 surcharge when using
purchase orders or credit card payment.*

Card Number _____

Expiration Date _____

Signature (Credit card registration only)

Please print
cardholder's name _____

For Office Use Only

Date In: _____

Check # _____ Amount: _____

Method of Payment:

____ Check ____ Purchase Order ____ Charge

Please mail completed registration form and payment to:

Sharing A Vision Conference
3705 Lincoln Trail
Taylorville, IL 62568

Workshop Selection

In order to help us assign room space for each workshop, participants are asked to indicate their preference of workshops for each time period. Participants will not be held to the choices made here, and indicating a preference does not guarantee participants a slot for a particular workshop. This information is only used to assign presenters to rooms. A description of each workshop appears in the program portion of this brochure on pages 6-16.

TUESDAY MORNING HALF DAY SESSION • 8:00 AM – 11:30 AM

- _____ Showcasing I
- _____ Strategies to Foster Social-Emotional CompetenceChandler/Hemmeter

TUESDAY SESSION I • 8:00 AM – 10:00 AM

- _____ The Effects of Incarceration on Family & CommunityArchibald
- _____ Adapting Environments for Children with Autism ...Beytien
- _____ Models of SupportBrown/Brown
- _____ Developing Family Centered Functional OutcomesBurke/Debelak
- _____ Using "Tool" Software with Young ChildrenCenter for Best Practices
- _____ Interactive MathematicsChampagne
- _____ Who Needs Assistive Tech Anyway?Christ
- _____ TAO of TeachingColoroso
- _____ Promoting Positive Behaviors When Working with Young ChildrenDelaney/Brookfield
- _____ Getting From Here to ThereFisher/Ginther
- _____ Peek Inside: Creative EnvironmentsLeff/Shugart
- _____ Writing OutcomesMaude/Corso
- _____ Ooey! Gooyey! Squishy! Plop!Murphy

TUESDAY SESSION II • 10:15 AM – 11:45 AM

- _____ Storytelling by Mrs. BroccoliArkley
- _____ The Software of Math, Science and Social StudiesCenter for Best Practices
- _____ Getting Started With Project WorkDoubet/Scranton
- _____ Cortical ... Visual ... WHAT?Ely
- _____ Making Peace with ResponsibilityEmser
- _____ Seizure Disorders & ChildrenGattone
- _____ Paraeducator PartnershipsKremer
- _____ Looking at LiteracyMcKinney
- _____ Science is EverywhereRockwell/Kniepkamp
- _____ Caring for the CaregiverRoope
- _____ Looking at Children with New EyesRosinia
- _____ More On the Illinois Early Learning StandardsScott
- _____ Accessing Community ResourcesValentine
- _____ Laugh, Lighten Up & LiveVanDonk
- _____ Conversations with Infants and ToddlersWard/LaBounty

TUESDAY SESSION III • 1:00 PM – 3:00 PM

- _____ Showcasing
- _____ Sustaining RelationshipsBollero
- _____ Kitchen Table MapBrown/Brown
- _____ Picture This!Center for Best Practices
- _____ Transition in Rural DistrictsCotter/Butterbrodt
- _____ Work Sampling System in IllinoisDavis/Johannes
- _____ The Project ApproachGallick
- _____ Exploring Ways the Environment Supports Learning ...Haigh
- _____ Asian American FamiliesMatoba Adler
- _____ Ooey! Gooyey! Squishy! Plop!Murphy (Repeat)
- _____ Identifying Communication DisordersReichert-Hoge
- _____ The Impact of Deafness on Young ChildrenScott
- _____ Not Being Able To Speak Is Not the SameSeagroves
- _____ Dealing with StressSims Rucker
- _____ Working with Hard to Reach FamiliesWedgeworth

- _____ Building a Classroom CommunityWeisheit/Leff
- _____ Developing & Using Birth-3 Program StandardsWitzman

TUESDAY SESSION IV • 3:15 PM – 4:45 PM

- _____ Storytelling by Mrs. Broccoli (Repeat)Arkley
- _____ Technology Open LabCenter for Best Practices
- _____ Membership Not VisitorshipCook/Denight
- _____ The Power of Project WorkDoubet/Scranton
- _____ Overview of the Illinois Early Intervention SystemGully/Ellinor
- _____ Creating a Peaceful Infant/Toddler EnvironmentHawley
- _____ Taming the Transition ConfusionHeins Ginther/Stauch
- _____ Collaboration-Successful TrainingKremer/Peters/Crosby
- _____ Making Math Marvelous & MeaningfulMcKinney
- _____ Shorter Than a SnoozeReichert-Hoge/Catlette
- _____ Partnering with ParentsRockwell/Kniepkamp
- _____ Don't Get Drawn InRoope
- _____ Stability Precedes MobilityRosinia
- _____ Autism 101Valentine
- _____ Good Game StrategiesVanDonk/Motsch
- _____ Don't You Be the Weakest LinkWasik
- _____ Sexual Abuse IssuesWhitaker

WEDNESDAY SESSION I • 10:45 AM – 12:15 PM

- _____ Showcasing I
- _____ Natural AlliesCatlett/Drake/Mertes/Miller/Yates
- _____ Your Preschool Computer Center ...Center for Best Practices
- _____ Ralph's WorldCovert
- _____ Supporting Infant/Toddler StaffDeLapp
- _____ Help! These Kids Don't Speak EnglishErvin
- _____ Getting Joey Out From Under the Sensory TableFrisbie
- _____ No Child Left BehindLieberman
- _____ Ages & Stages QuestionnaireListon
- _____ H.U.M. for ToddlersPeterson
- _____ Math for PreschoolersPiper
- _____ Supporting Families in High Quality Early Childhood ProgramsRobinson
- _____ Early Childhood Mental Health Consultation ...Roope/Paredes
- _____ The Technology RevolutionSluga
- _____ Developing a Reggio Environment for Infant/ToddlersVolz/Carlson
- _____ Linking Curriculum and AssessmentWhalen

WEDNESDAY SESSION II • 1:30 PM – 3:00 PM

- _____ Technology Open LabCenter for Best Practices
- _____ Ideas for Making Inclusion WorkDoyle
- _____ When Children Challenge & Tots are a TerrorFrisbie
- _____ Work SamplingGrace
- _____ Using Portfolios to Track Children's ProgressGronlund
- _____ Different Children, Different NeedsHocking
- _____ Ages & Stages Questionnaire (ASQ-SE)Liston
- _____ Relating IEP Goals and StandardsMorrison
- _____ H.U.M.-Highly Usable MusicPeterson
- _____ Computers, Technology, and Early LearningRoss
- _____ Resolving ConflictsSmith
- _____ Praise Versus EncouragementWeisheit
- _____ Blending ClassroomsWhalen
- _____ Making Emotional ConnectionsYates

2003 CONFERENCE *Windows of Opportunity*

September 29–October 1, 2003
Crowne Plaza Hotel
Springfield, Illinois



*If you receive duplicate
copies of the program,
kindly share them with
colleagues, families of
young children, and others
who may be interested.*

REGISTER TODAY!

**Questions regarding registration
or the conference?**

Contact Susan Ferry . . .

217/824-4776

or E-mail . . .

sharingavision@aol.com



Illinois Division for Early Childhood

3705 Lincoln Trail

Taylorville, IL 62568

PRESORTED
STANDARD
U.S. POSTAGE
PAID
SPRINGFIELD, IL
PERMIT NO. 500